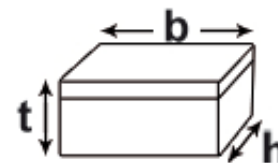
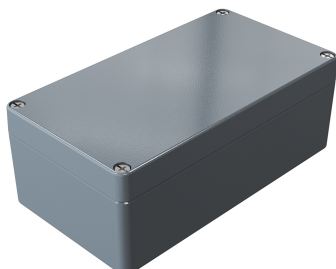


## Aluminium Standard – 01.12 22 08

Aluminium enclosure consisting of lid, seal, incl. captive +/-stainless steel screws, base with 2 or 4 earthing screws



|                           |                |
|---------------------------|----------------|
| Dimensions H x W x D (mm) | 120 x 220 x 81 |
| Weight (g)                | 1410           |
| Order number              | 01.12 22 08    |
| Product type              | ALS 01090      |

- + Robust aluminium enclosure for mechanical engineering and automation technology
- + Fixing options for DIN rails and mounting plates
- + Usable in wide temperature area



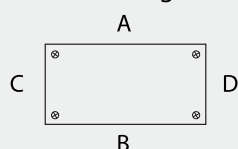
### Technical Data

|                           |  |
|---------------------------|--|
| Material                  | DIN EN 1706 EN AC-AISI 12 (Fe)   |
| Colour                    | Powder coating, RAL 7001, silver grey, special colour on request   |
| Ingress protection        | IP 66 to EN 60529,<br>higher protection on request   |
| Impact resistance         | 7 Joule in reference to EN 60079-0   |
| Temperature range         | PU (polyurethane) seal (std.): -40°C to +90°C<br>CR (chloroprene) seal: -40°C to +100°C<br>VMQ (silicone) seal (optional): -60°C to +130°C |
| Other versions on request | EMC, SBG, SBGL, SWB, Silicone lid seal   |

## Aluminium Standard – 01.12 22 08

### Number of cable glands

Maximum number of cable glands to DIN 50262\*



| M  | PG    | Side |     |
|----|-------|------|-----|
|    |       | A/B  | C/D |
| 12 | 17,25 | 34   | 11  |
| 16 | 25,30 | 15   | 6   |
| 20 | 27,60 | 14   | 4   |
| 25 | 37,95 | 6    | 2   |
| 32 | 48,30 | 4    | 1   |
| 40 | 60,95 |      |     |
| 50 | 69,00 |      |     |
| 63 | 74,75 |      |     |
| 75 |       |      |     |
| 85 |       |      |     |

### Commercial Data

|                       |               |
|-----------------------|---------------|
| Country of origin     | IN            |
| Pieces per packaging  | 1             |
| Customs tariff number | 85369095      |
| Weight (g)            | 1410          |
| GTIN                  | 4250157900173 |

### ETIM Classification

|            |          |
|------------|----------|
| ETIM-Class | EC000058 |
|------------|----------|

### Accessories

| Description                                      | Order number |
|--|--------------|
| External mounting brackets set = 4 pcs           | 10.03 11 02  |
| External hinges Swivelling range 150°set = 2 pcs | 10.02 70 01  |
| DIN rails TS 35/7,5                              | 10.06 14 22  |
| Earth rail                                       | 10.06 20 02  |
| Mounting plate                                   | 10.01 10 08  |
| Allen lid screws                                 | 12.01 80 04  |